



# **Lodi Unified School District**

---

## **2020 Census Trustee Area Compliance Evaluation & Proposed Adjustments**

January 18, 2022

# Objective

- **Review current Trustee Areas for compliance with California Education Code 5019.5 with 2020 census**
- **In-compliance: No further steps required**
- **Out-of-compliance: Ensure population balance of Trustee Area by adjusting the boundaries**

# Summary California Education Code 5019.5

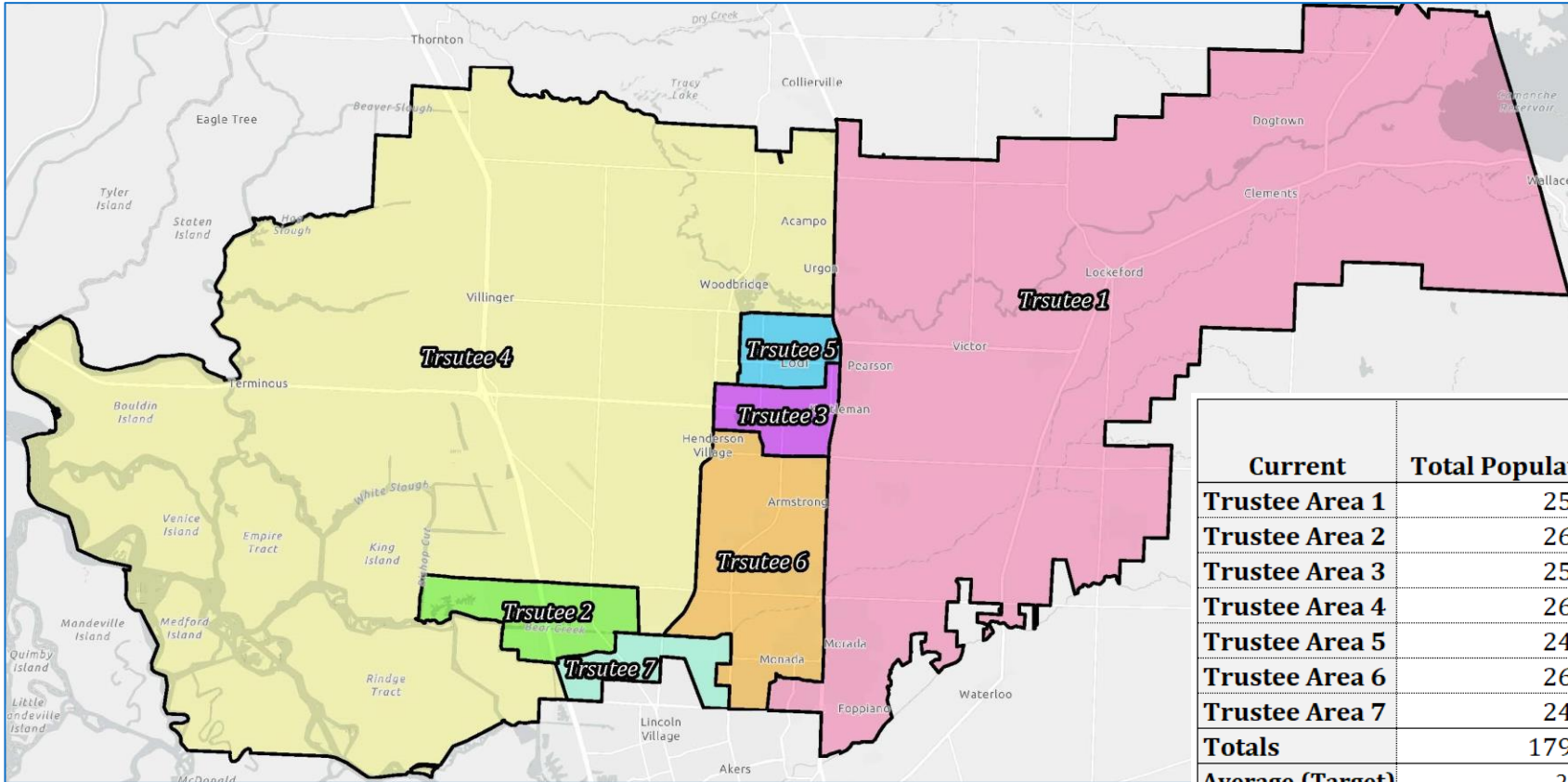
- **Review Trustee Areas after every decennial federal census**
- **Achieve population equality as nearly as is practicable**
  - **Total population**
    - **Not Citizens nor Voters**
  - **Total Population/Trustee Areas = Average**
- **Adjusted Trustee Areas must be submitted to county by February 28, 2022**

# Davis Demographics Tasks

- **Re-create current Trustee Areas with 2020 census blocks**
- **Determine compliance**
- **Create in-compliance scenarios for Board consideration and approval**
- **Submit selected scenario to San Joaquin County by February 28, 2022**

# Current Trustee Area

**Not in compliance - District variance is at 11.5%**

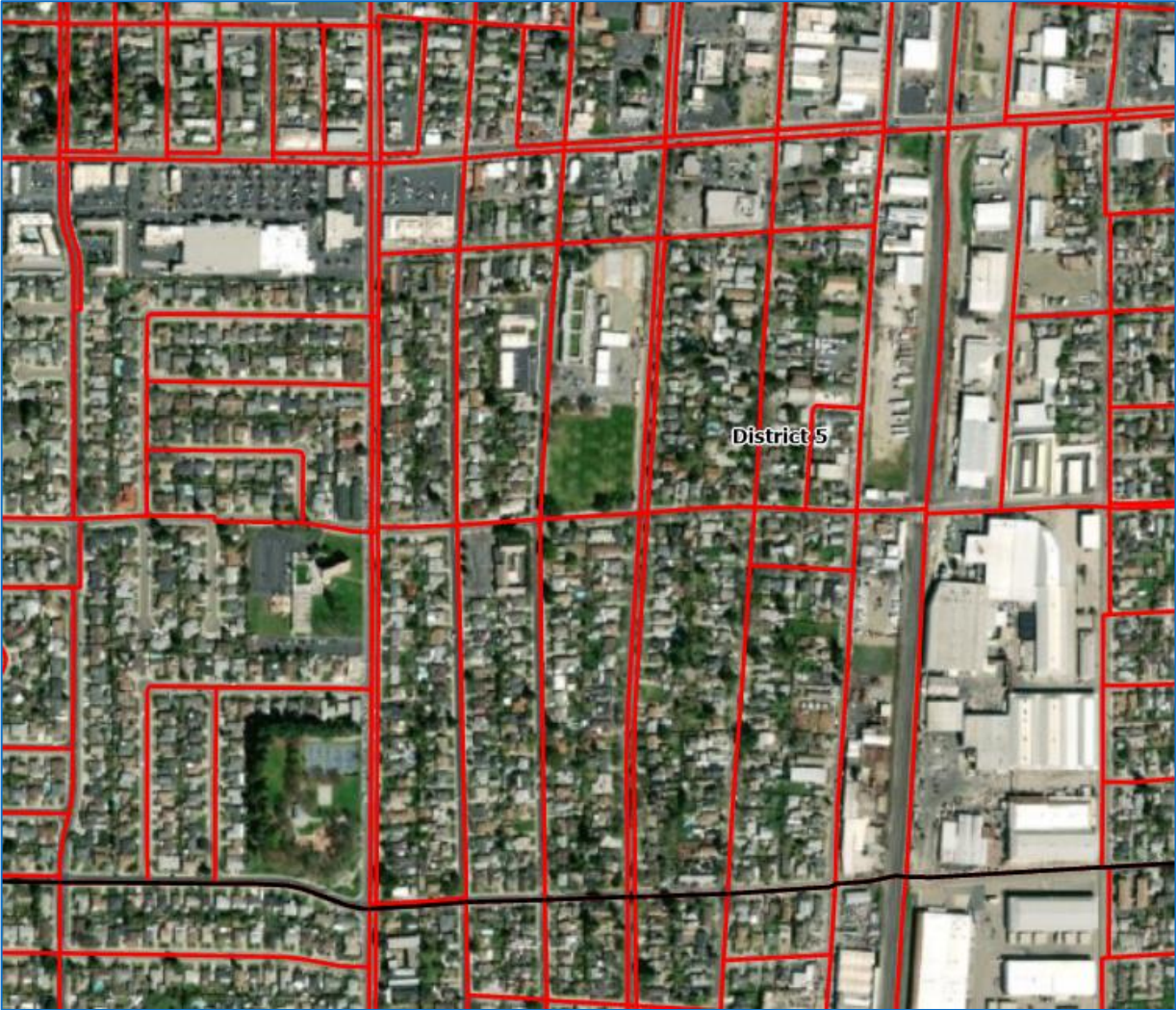
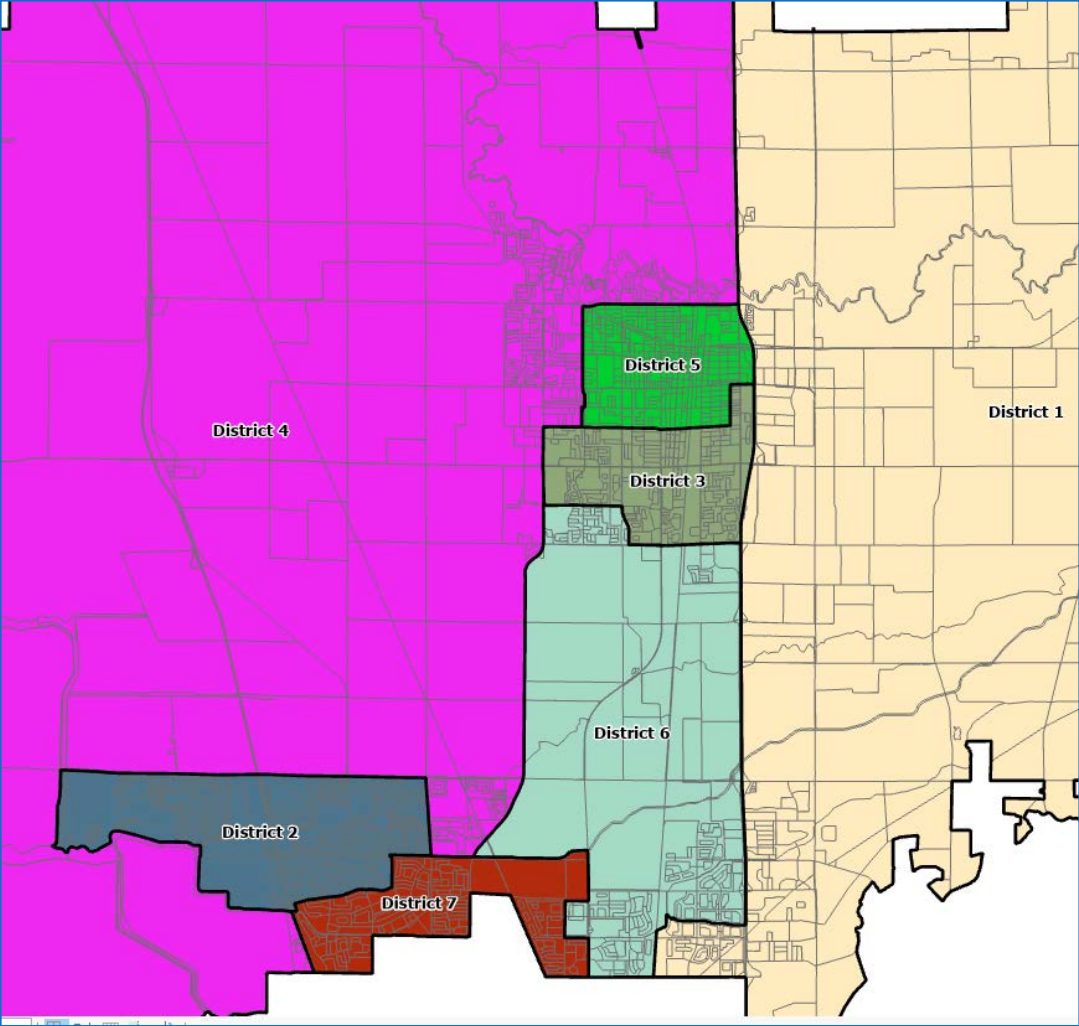


Current	Total Population	Variance	Citizen Voting Age Population 2015-2019 Estimate
Trustee Area 1	25,711	0.1%	16,312
Trustee Area 2	26,289	2.4%	17,534
Trustee Area 3	25,959	1.1%	16,288
Trustee Area 4	26,106	1.7%	17,107
Trustee Area 5	24,051	-6.3%	14,520
Trustee Area 6	26,998	5.2%	15,169
Trustee Area 7	24,607	-4.2%	16,459
<b>Totals</b>	<b>179,721</b>	<b>Max Variance 11.5%</b>	<b>113,389</b>
<b>Average (Target)</b>	<b>25,674</b>		

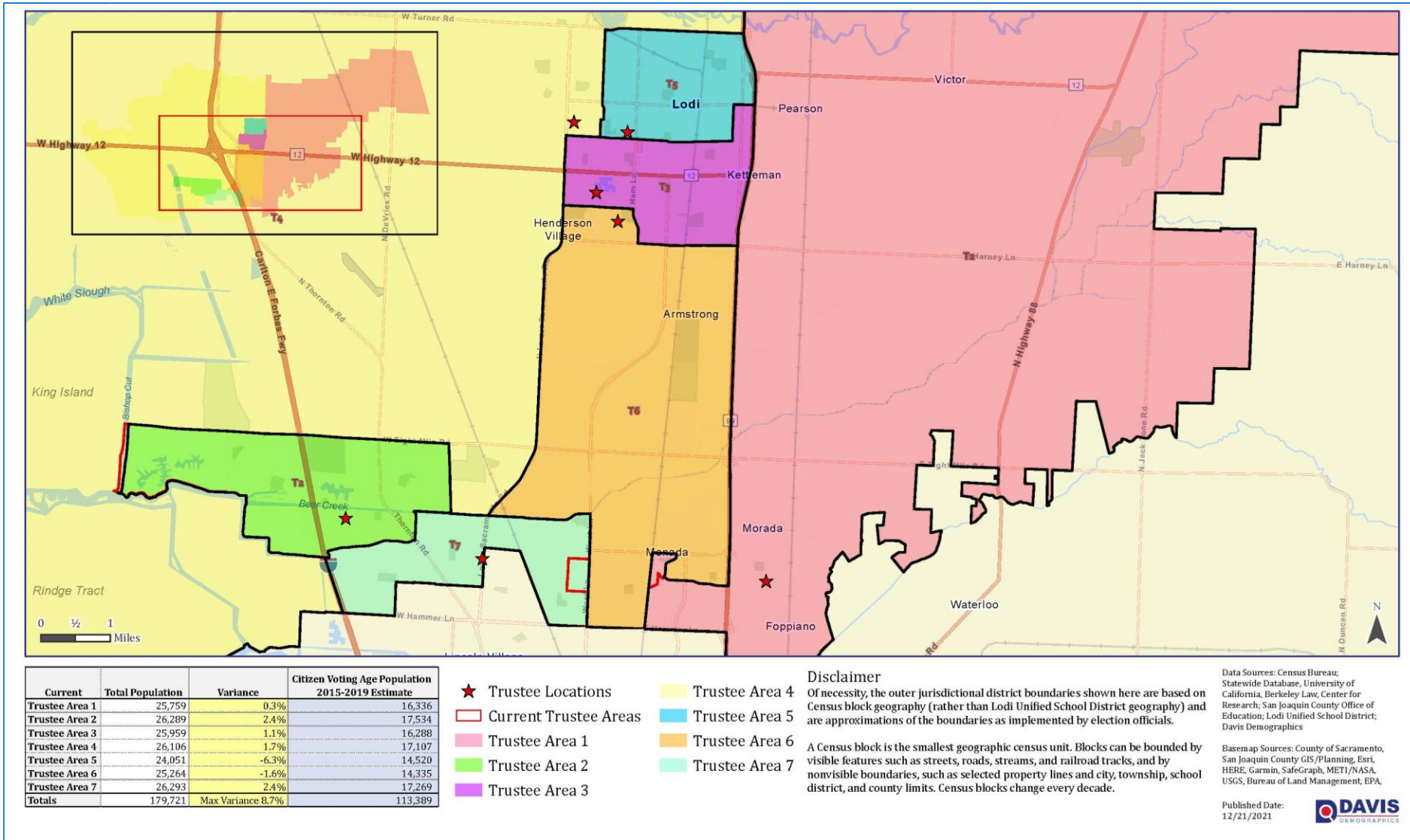
# Additional Considerations

- **Each Trustee Area must be less than 10% between smallest to largest**
- **This is not a “re-draw” of Trustee Areas**
  - **Least disruption possible**
- **Comply with Federal laws regarding compactness and contiguity**

# Census Blocks

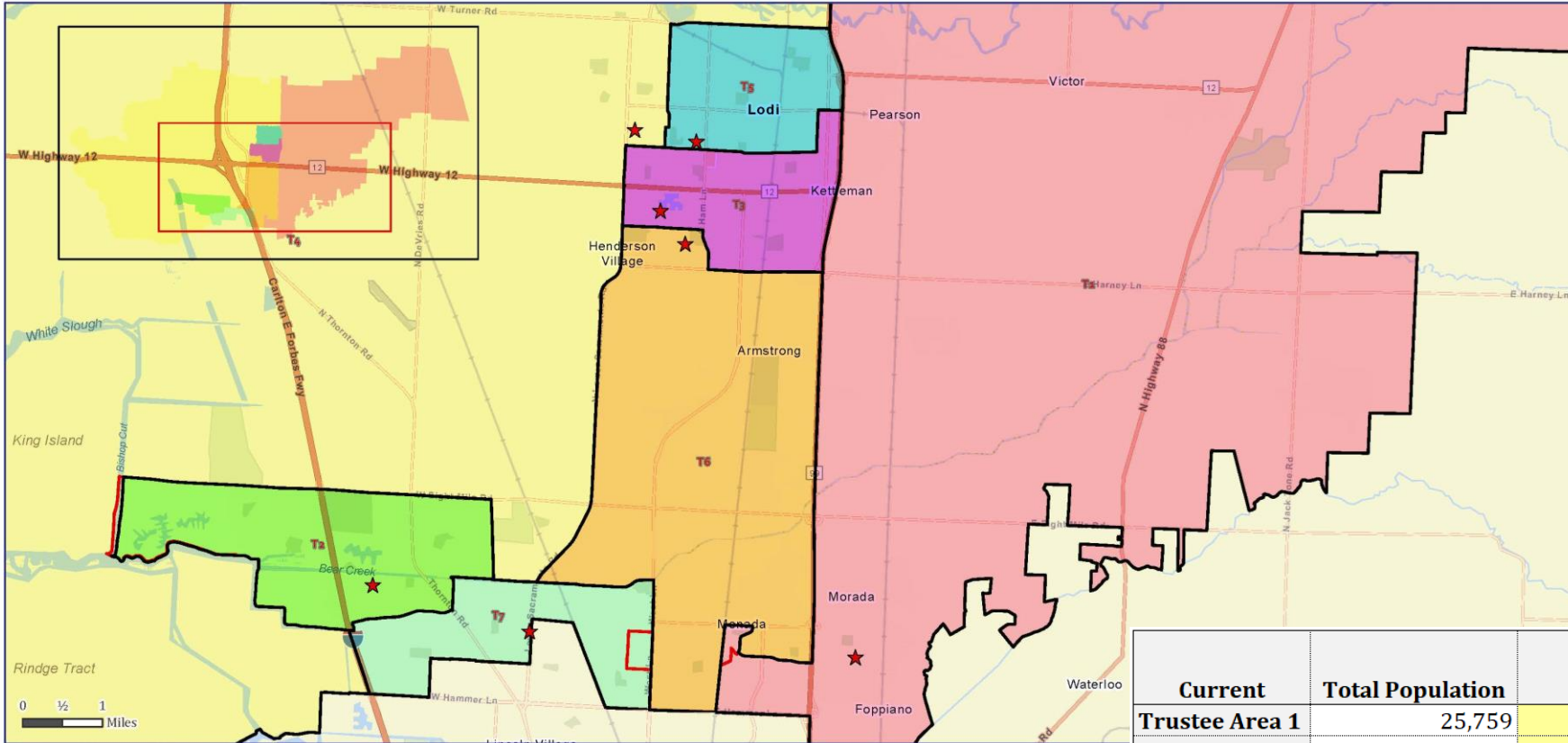


# Scenario A



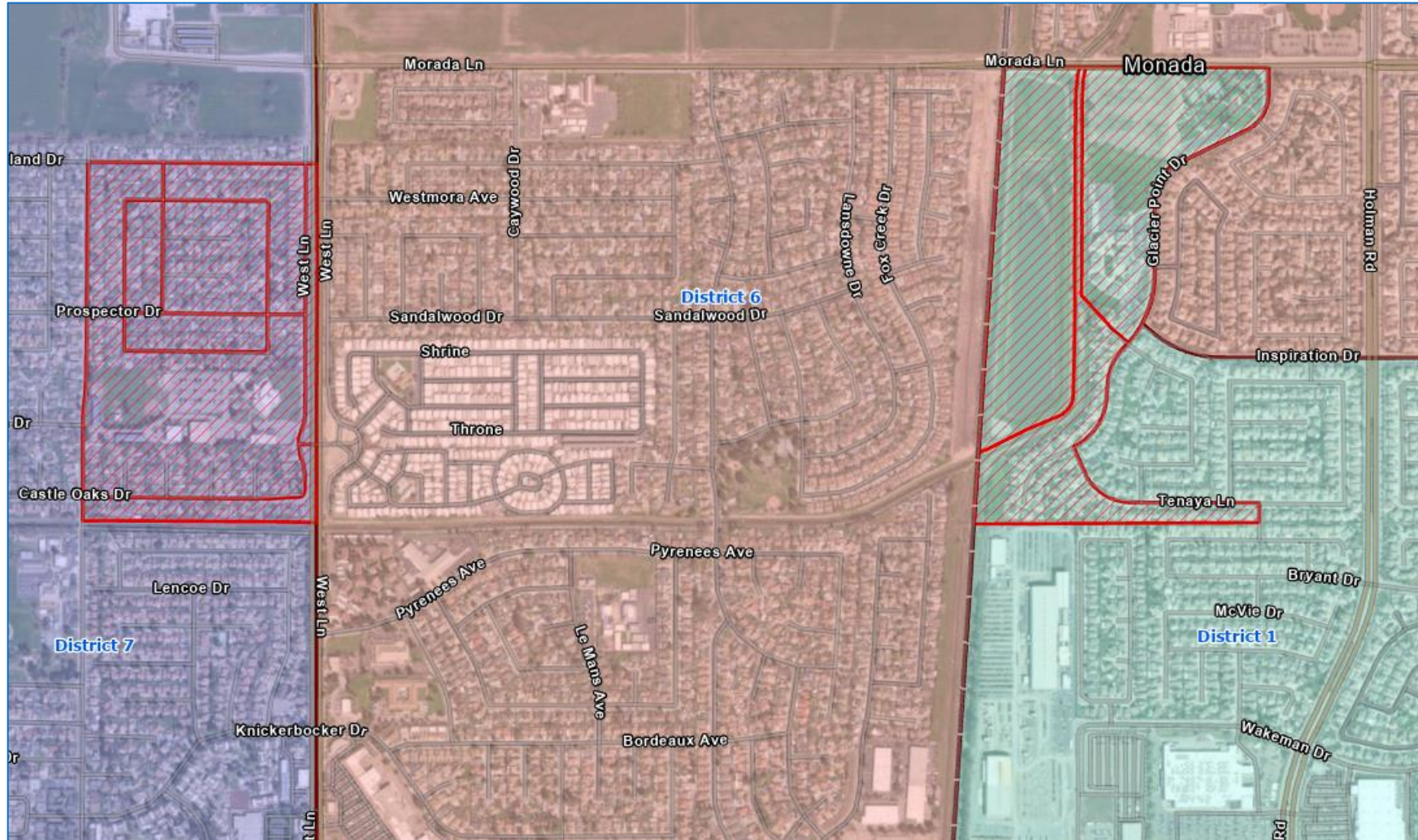


# Scenario A

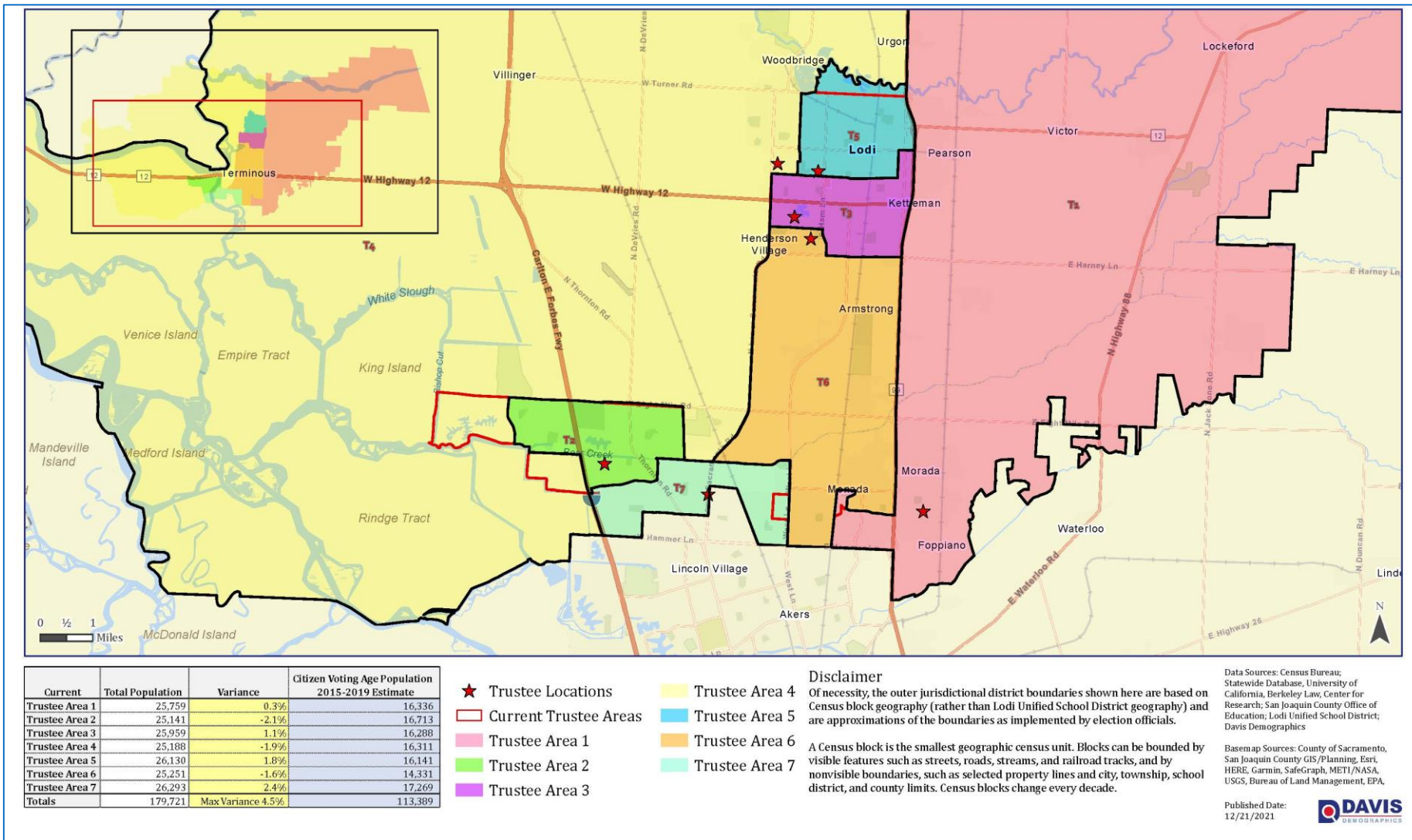


Current	Total Population	Variance	Citizen Voting Age Population 2015-2019 Estimate
Trustee Area 1	25,759	0.3%	16,336
Trustee Area 2	26,289	2.4%	17,534
Trustee Area 3	25,959	1.1%	16,288
Trustee Area 4	26,106	1.7%	17,107
Trustee Area 5	24,051	-6.3%	14,520
Trustee Area 6	25,264	-1.6%	14,335
Trustee Area 7	26,293	2.4%	17,269
<b>Totals</b>	<b>179,721</b>	<b>Max Variance 8.7%</b>	<b>113,389</b>

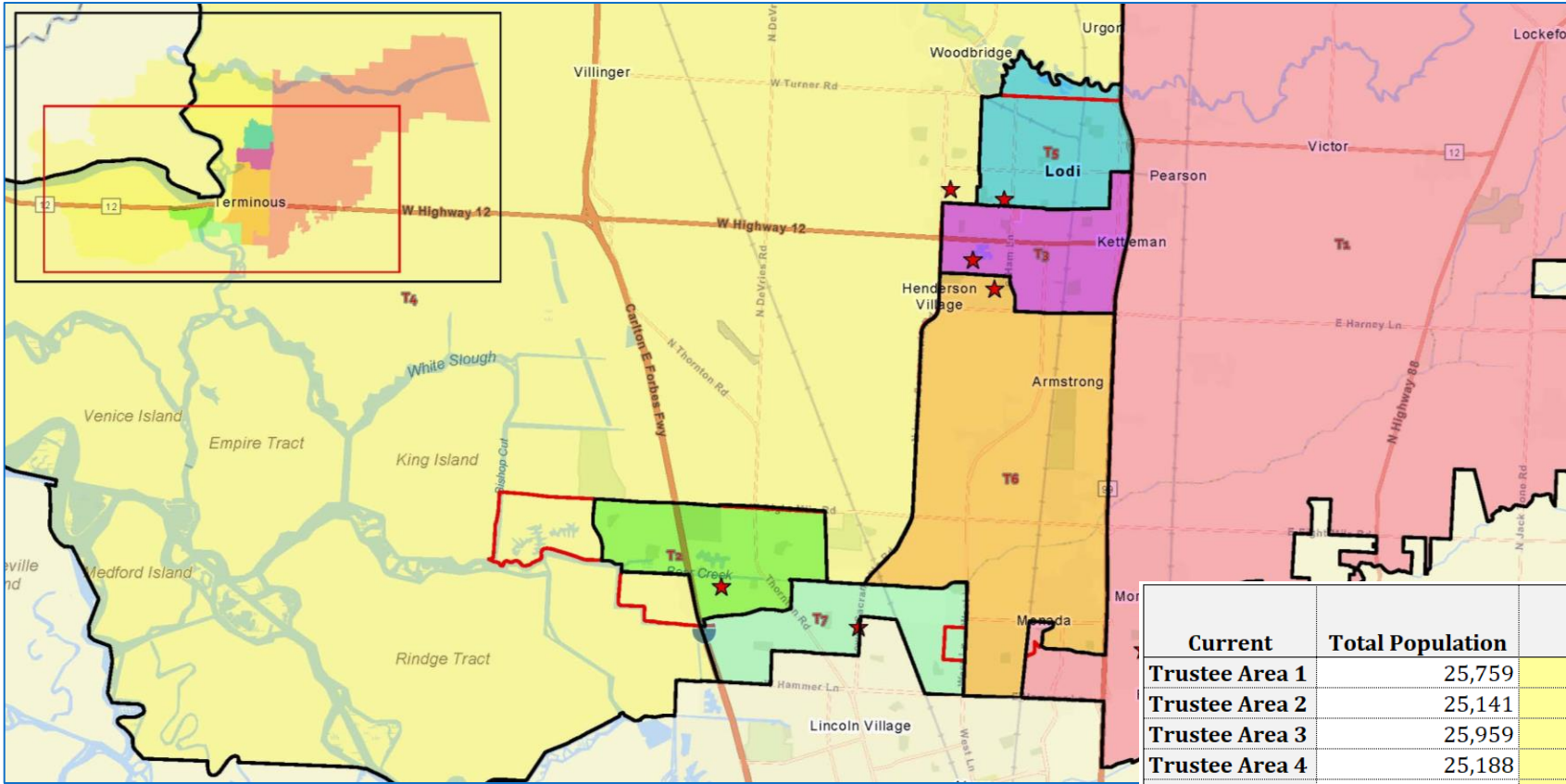
# Areas of Change



# Scenario B

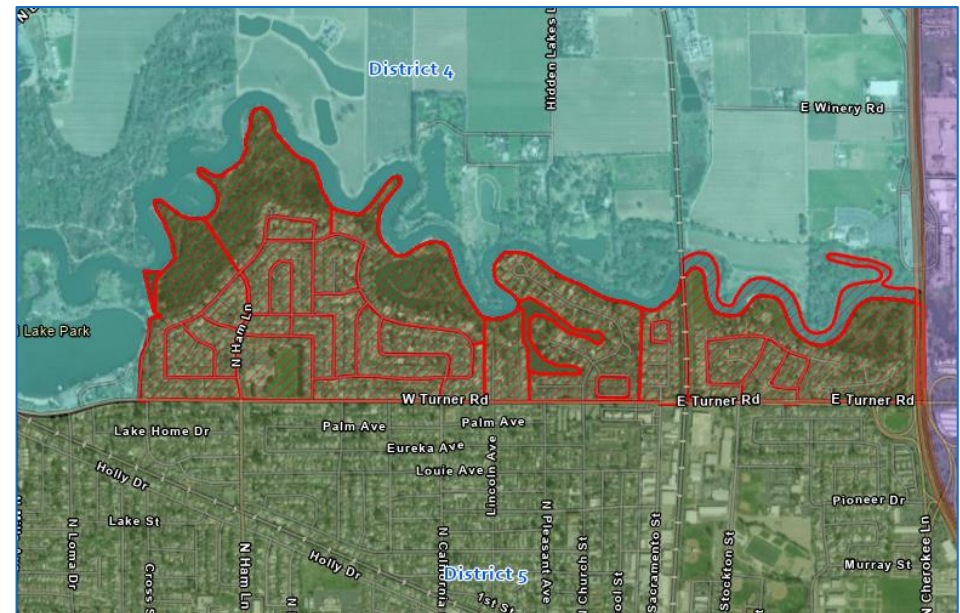
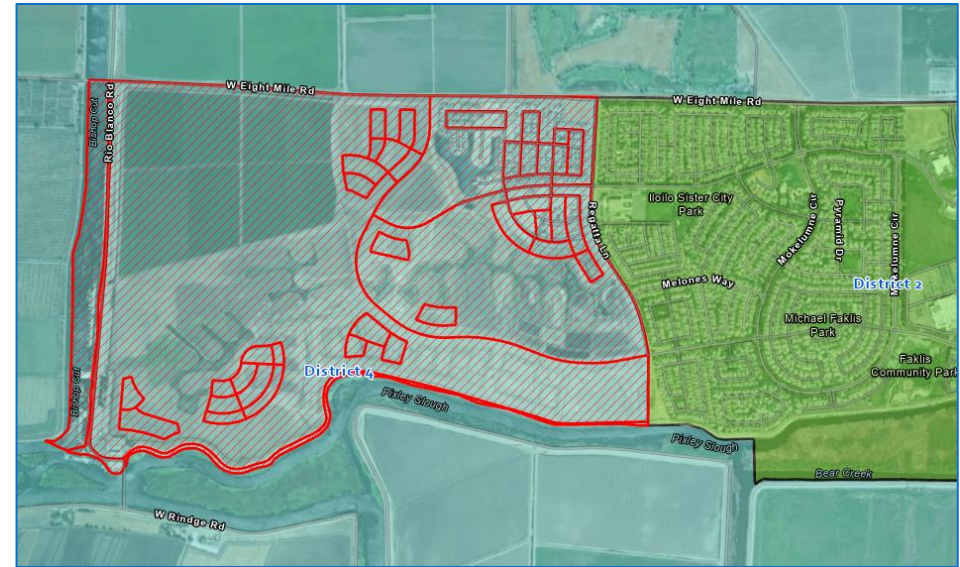
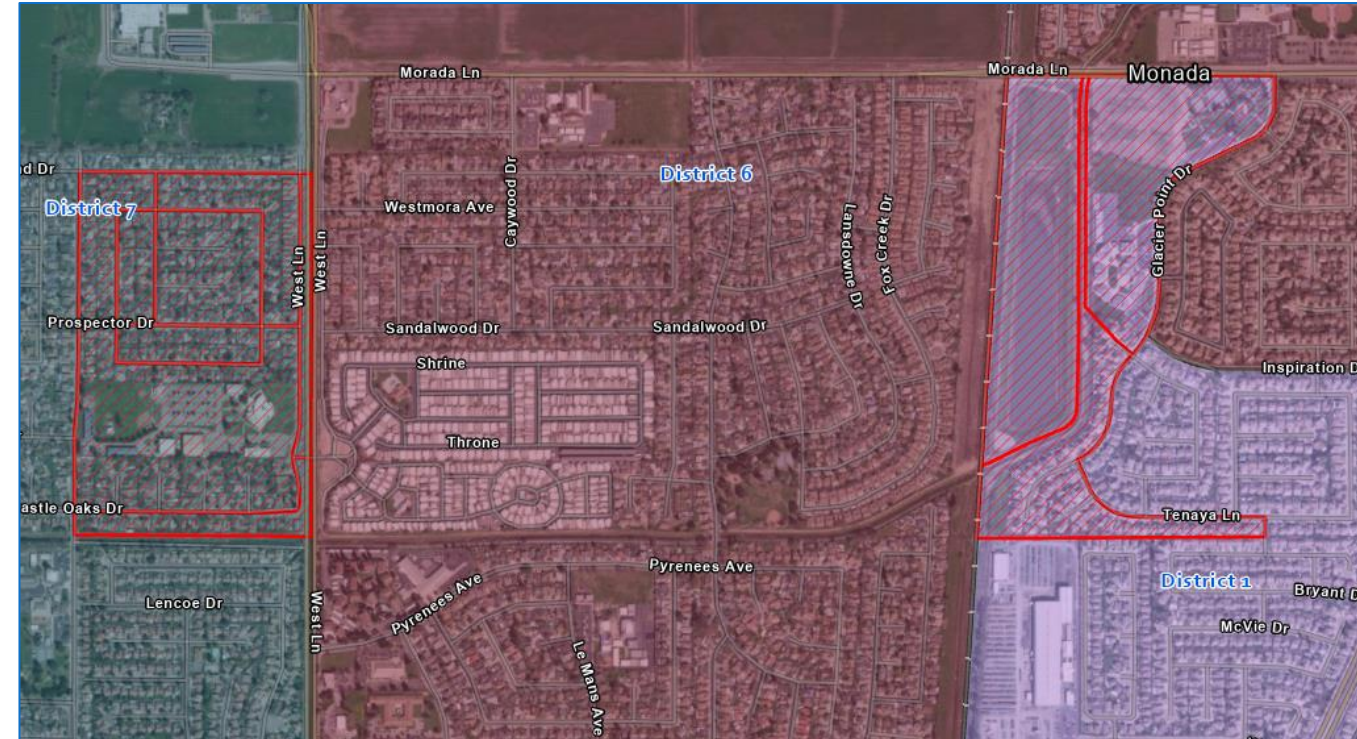


# Scenario B



Current	Total Population	Variance	Citizen Voting Age Population 2015-2019 Estimate
Trustee Area 1	25,759	0.3%	16,336
Trustee Area 2	25,141	-2.1%	16,713
Trustee Area 3	25,959	1.1%	16,288
Trustee Area 4	25,188	-1.9%	16,311
Trustee Area 5	26,130	1.8%	16,141
Trustee Area 6	25,251	-1.6%	14,331
Trustee Area 7	26,293	2.4%	17,269
<b>Totals</b>	<b>179,721</b>	<b>Max Variance 4.5%</b>	<b>113,389</b>

# Areas of Change



Current Trustee Areas

# CVAP Analysis – Maintain Minority Majorities

Citizens by Voting Age Population Estimate (2015-2019)							
CVA Population	Trustee Area 1	Trustee Area 2	Trustee Area 3	Trustee Area 4	Trustee Area 5	Trustee Area 6	Trustee Area 7
<b>Total CVA Population</b>	16,312	17,534	16,288	17,107	14,520	15,169	16,459
<b>Population Variance</b>	114	1,336	90	909	-1,678	-1,029	261
	0.7%	8.2%	0.6%	5.6%	-10.4%	-6.4%	1.6%
<b>Hispanic/Latino</b>	3,385	3,831	5,132	2,622	4,130	3,447	4,793
	20.8%	21.8%	31.5%	15.3%	28.4%	22.7%	29.1%
<b>White</b>	9,568	6,045	8,798	11,776	8,833	4,324	5,284
	58.7%	34.5%	54.0%	68.8%	60.8%	28.5%	32.1%
<b>Asian</b>	2,145	5,496	1,633	1,604	943	5,478	3,261
	13.1%	31.3%	10.0%	9.4%	6.5%	36.1%	19.8%
<b>Black/African American</b>	599	1,577	284	715	340	1,360	2,296
	3.7%	9.0%	1.7%	4.2%	2.3%	9.0%	13.9%
<b>American Indian/Alaska Native</b>	129	42	40	45	34	41	84
	0.8%	0.2%	0.2%	0.3%	0.2%	0.3%	0.5%
<b>Native Hawaiian/Pacific Islander</b>	154	55	72	7	31	161	105
	0.9%	0.3%	0.4%	0.0%	0.2%	1.1%	0.6%
<b>2 or More Races</b>	332	488	329	338	209	358	636
	2.0%	2.8%	2.0%	2.0%	1.4%	2.4%	3.9%

Option A

Citizens by Voting Age Population Estimate (2015-2019)							
CVA Population	Trustee Area 1	Trustee Area 2	Trustee Area 3	Trustee Area 4	Trustee Area 5	Trustee Area 6	Trustee Area 7
<b>Total CVA Population</b>	16,336	17,534	16,288	17,107	14,520	14,335	17,269
<b>Population Variance</b>	138	1,336	90	909	-1,678	-1,863	1,071
	0.8%	8.2%	0.6%	5.6%	-10.4%	-11.5%	6.6%
<b>Hispanic/Latino</b>	3,390	3,831	5,132	2,622	4,130	3,240	4,995
	20.8%	21.8%	31.5%	15.3%	28.4%	22.6%	28.9%
<b>White</b>	9,572	6,045	8,798	11,776	8,833	4,151	5,453
	58.6%	34.5%	54.0%	68.8%	60.8%	29.0%	31.6%
<b>Asian</b>	2,156	5,496	1,633	1,604	943	5,154	3,574
	13.2%	31.3%	10.0%	9.4%	6.5%	36.0%	20.7%
<b>Black/African American</b>	599	1,577	284	715	340	1,289	2,367
	3.7%	9.0%	1.7%	4.2%	2.3%	9.0%	13.7%
<b>American Indian/Alaska Native</b>	133	42	40	45	34	33	88
	0.8%	0.2%	0.2%	0.3%	0.2%	0.2%	0.5%
<b>Native Hawaiian/Pacific Islander</b>	154	55	72	7	31	159	107
	0.9%	0.3%	0.4%	0.0%	0.2%	1.1%	0.6%
<b>2 or More Races</b>	332	488	329	338	209	309	685
	2.0%	2.8%	2.0%	2.0%	1.4%	2.2%	4.0%

Option B

Citizens by Voting Age Population Estimate (2015-2019)							
CVA Population	Trustee Area 1	Trustee Area 2	Trustee Area 3	Trustee Area 4	Trustee Area 5	Trustee Area 6	Trustee Area 7
<b>Total CVA Population</b>	16,336	16,713	16,288	16,311	16,141	14,331	17,269
<b>Population Variance</b>	138	515	90	113	-57	-1,867	1,071
	0.8%	3.2%	0.6%	0.7%	-0.4%	-11.5%	6.6%
<b>Hispanic/Latino</b>	3,390	3,638	5,132	2,630	4,315	3,240	4,995
	20.8%	21.8%	31.5%	16.1%	26.7%	22.6%	28.9%
<b>White</b>	9,572	5,768	8,798	10,801	10,089	4,147	5,453
	58.6%	34.5%	54.0%	66.2%	62.5%	28.9%	31.6%
<b>Asian</b>	2,156	5,270	1,633	1,704	1,069	5,154	3,574
	13.2%	31.5%	10.0%	10.4%	6.6%	36.0%	20.7%
<b>Black/African American</b>	599	1,514	284	750	368	1,289	2,367
	3.7%	9.1%	1.7%	4.6%	2.3%	9.0%	13.7%
<b>American Indian/Alaska Native</b>	133	42	40	45	34	33	88
	0.8%	0.3%	0.2%	0.3%	0.2%	0.2%	0.5%
<b>Native Hawaiian/Pacific Islander</b>	154	55	72	7	31	159	107
	0.9%	0.3%	0.4%	0.0%	0.2%	1.1%	0.6%
<b>2 or More Races</b>	332	426	329	374	235	309	685
	2.0%	2.5%	2.0%	2.3%	1.5%	2.2%	4.0%

THANK YOU!

Questions