

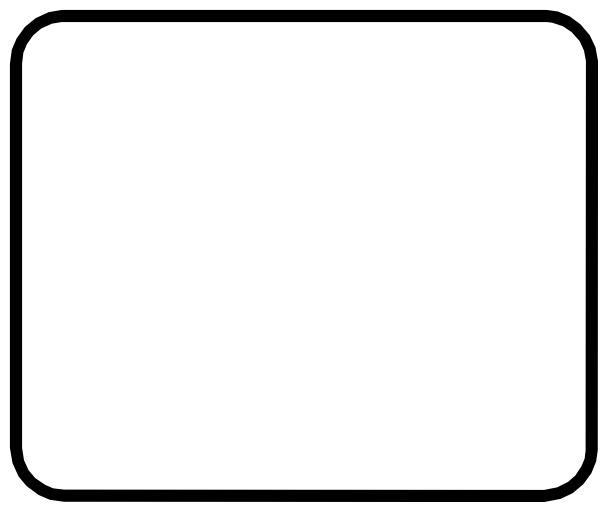
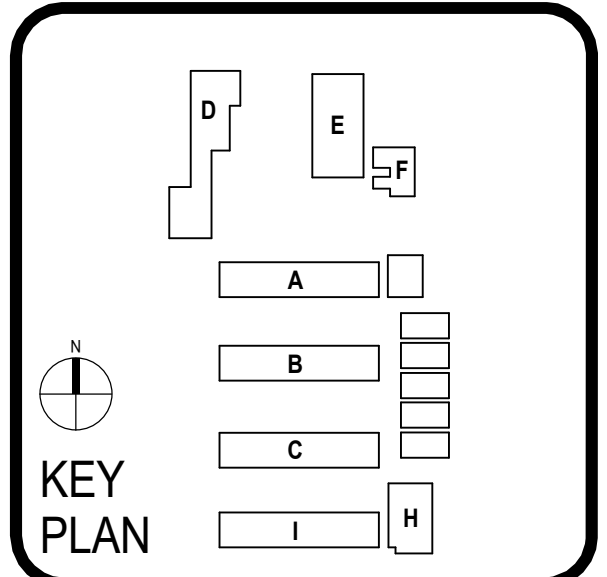
- ### SITE PLAN NOTES
- REFER TO CIVIL DOCUMENTS
 - COORD. ALL SPOT ELEVATIONS AND DIMENSIONS WITH CIVIL, LANDSCAPE, AND/OR STRUCTURAL DOCUMENTS
 - PROVIDE AND INSTALL POSITIVE DRAINAGE AWAY FROM ALL BUILDINGS OF 1% MINIMUM, 2% MAXIMUM AT ALL EXTERIOR PAVED PEDESTRIAN AREAS, INCLUDING BUT NOT LIMITED TO, SIDEWALKS, PATIOS, STAIRS, PAVING, U.N.O.
 - PROVIDE AND INSTALL POSITIVE DRAINAGE AWAY FROM ALL BUILDINGS OF 5% FOR A HORIZ. DISTANCE OF 10 FEET AT ALL EXTERIOR NON-PAVED AREAS U.N.O.
 - REFER TO CIVIL DOCUMENTS FOR CONCRETE SIDEWALK EXPANSION JOINTS AND CONCRETE SIDEWALK CONTROL JOINTS
 - VERIFY AND CONFIRM ALL JOINT LAYOUTS AT ALL CONCRETE SIDEWALKS WITH ARCH. PRIOR TO POURING OF CONCRETE
 - PROVIDE AND INSTALL CONCRETE SIDEWALK EXPANSION JOINTS AT AREAS NOT SPECIFICALLY INDICATED AT 30 FEET ON-CENTER MAX. U.N.O.
 - PROVIDE AND INSTALL CONCRETE SIDEWALK CONTROL JOINTS AT AREAS NOT SPECIFICALLY INDICATED AT DISTANCES EQUIVALENT TO SIDEWALK WIDTH, BUT NOT TO EXCEED 10 FEET ON-CENTER MAX.
 - VERIFY ALL SITE SIGNAGE LOCATIONS WITH ARCH. PRIOR TO INSTALLATION OF SITE SIGNAGE

- ### SITE PLAN MATERIALS LEGEND
- PROPOSED CONCRETE PAVING RE: CIVIL DRAWINGS
 - PROPOSED ASPHALT PAVING RE: CIVIL DRAWINGS
 - PROPOSED LANDSCAPED AREA RE: LANDSCAPE DRAWINGS
 - EXISTING BUILDING
 - PROPOSED BUILDING
 - PROPOSED LUNCH SHELTER
 - PROPERTY LINE
 - CHAIN LINK FENCE



ARCHITECT PBK Architects, Inc.
FOLSOM
1110 Iron Point Road, Suite 200
Folsom, CA 95630-8315
916-355-5922

DAVIS ELEMENTARY SCHOOL MODERNIZATION
LODI UNIFIED SCHOOL DISTRICT
DAVIS ELEMENTARY SCHOOL
5224 EAST MORADA LANE
STOCKTON, CA 95212



CLIENT		
LODI UNIFIED SCHOOL DISTRICT		
PROJECT NUMBER		
230217		
DATE		
09/19/2024		
DRAWN BY: MG		
CHKED BY: KL		
REVISIONS		
#	DESCRIPTION	DATE

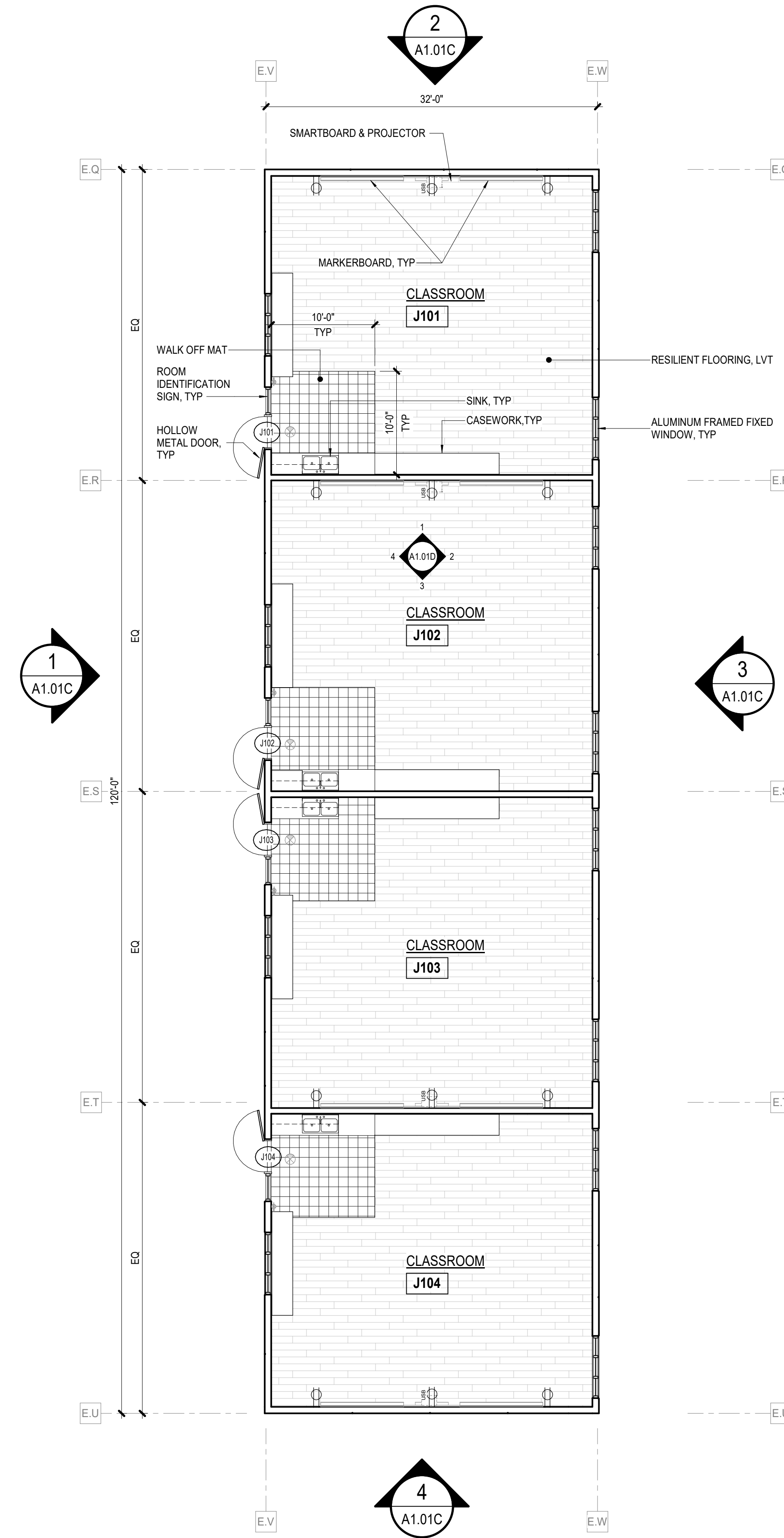
SITE PLAN

A1.01A

This document is for plan review only

1 FLOOR PLAN - MODULAR BUILDING

SCALE: 1/8" = 1'-0"



FLOOR PLAN LEGEND

- ROOM NAME
106
- ROOM NAME & NUMBER
- NEW PARTITION
REFER TO SHEET 00.00 FOR TYPES
- EXISTING PARTITION
- DOOR DESIGNATION
REFER TO SHEET A9.02 FOR DOOR SCHEDULE
- WINDOW DESIGNATION
REFER TO SHEET A9.01 FOR ELEVATION TYPE
- NOT IN CONTRACT
- FLOOR DRAIN

FLOOR FINISH MATERIALS LEGEND

- LVT-1, LUXURY VINYL TILE
RE: FINISH SCHEDULE
- EPX-1 EPOXY FLOORING
RE: FINISH SCHEDULE
- WOM-1 WALK OFF MAT
RE: FINISH SCHEDULE

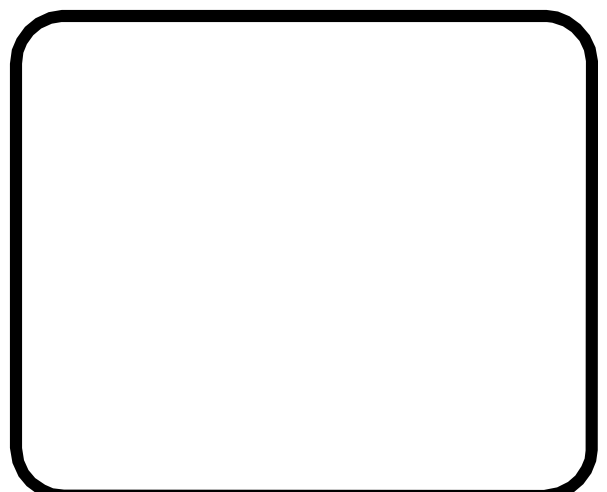
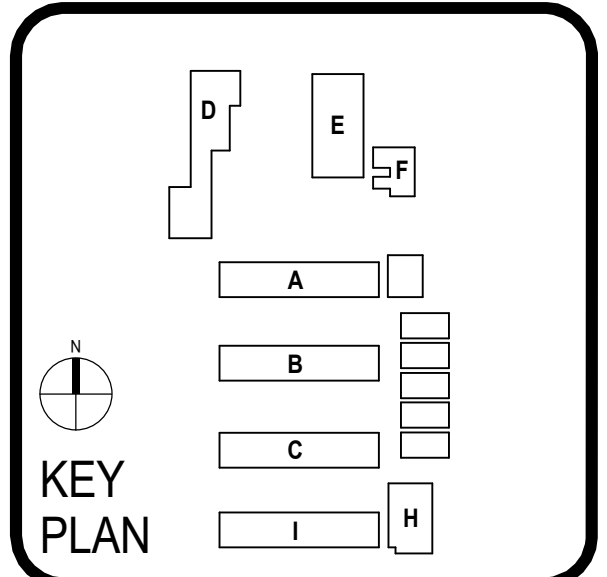
Not for permitting or construction



ARCHITECT PBK Architects, Inc.
FOLSOM
1110 Iron Point Road, Suite 200
Folsom, CA 95630-8315
916-355-5922

DAVIS ELEMENTARY SCHOOL MODERNIZATION

LODI UNIFIED SCHOOL DISTRICT
DAVIS ELEMENTARY SCHOOL
5224 EAST MORADA LANE
STOCKTON, CA 95212




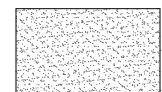
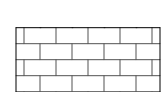

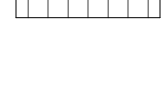
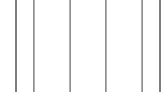

CLIENT	
LODI UNIFIED SCHOOL DISTRICT	
PROJECT NUMBER	
230217	
DATE	09/19/2024
DRAWN BY: MG	CHEKED BY: KL
REVISIONS	
#	DESCRIPTION DATE

This document is for plan review only

FLOOR PLAN

A1.01B

EXTERIOR MATERIALS LEGEND

-  EXTERIOR CEMENT PLASTER
-  CAST-IN-PLACE CONCRETE
-  CONCRETE UNIT MASONRY
-  SIDING
-  METAL STANDING SEAM ROOF PANELS
-  ASPHALT ROOFING SHINGLES
-  CONCRETE ROOFING TILES

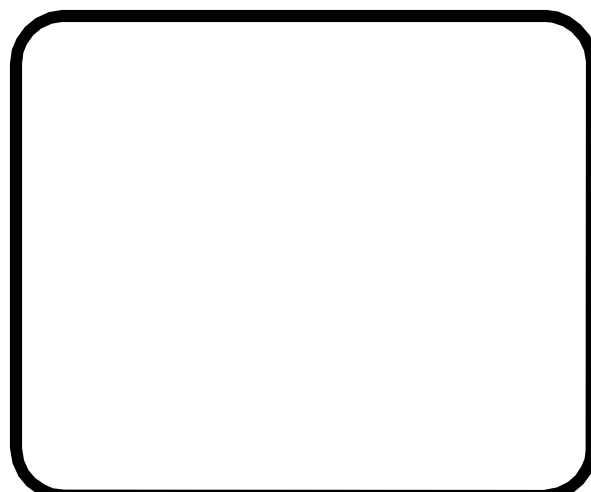
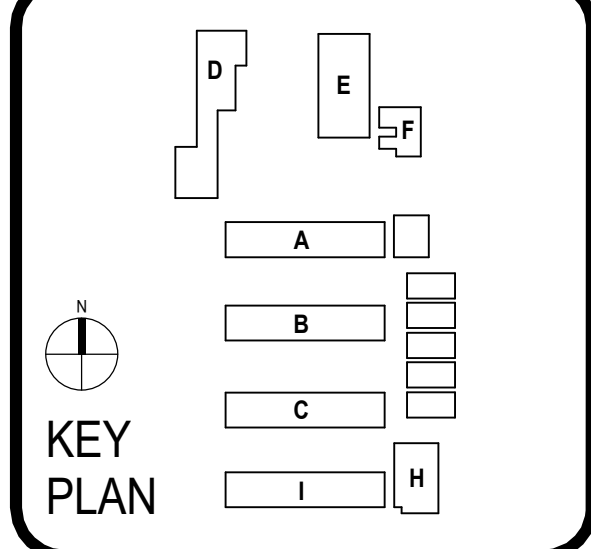
Not for permitting or construction



ARCHITECT PBK Architects, Inc.
FOLSOM
1110 Iron Point Road, Suite 200
Folsom, CA 95630-8315
916-355-5922

DAVIS ELEMENTARY SCHOOL MODERNIZATION

LODI UNIFIED SCHOOL DISTRICT
DAVIS ELEMENTARY SCHOOL
5224 EAST MORADA LANE
STOCKTON, CA 95212



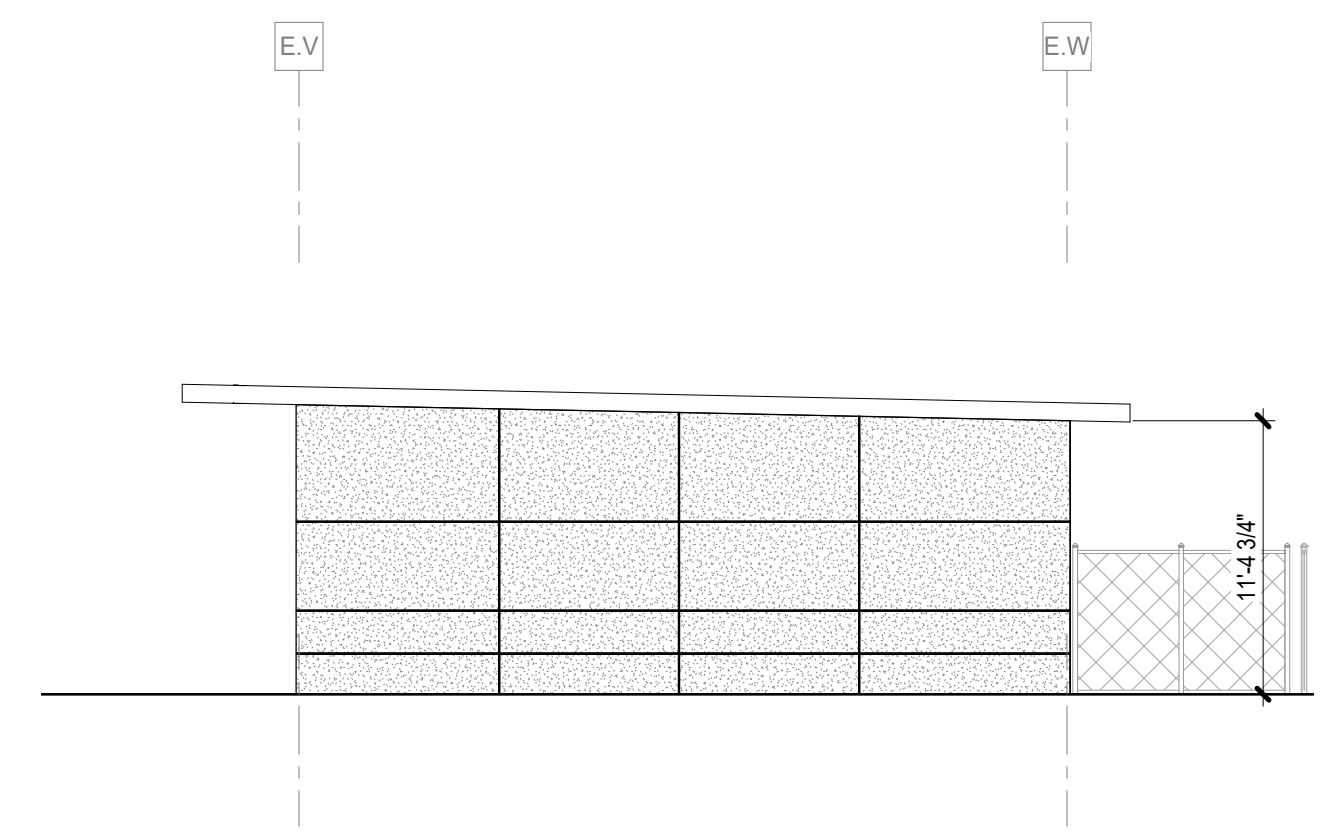
CLIENT	
LODI UNIFIED SCHOOL DISTRICT	
PROJECT NUMBER	
230217	
DATE	09/19/2024
DRAWN BY:	MG
CHECKED BY:	KL
REVISIONS	
#	DESCRIPTION

EXTERIOR ELEVATION

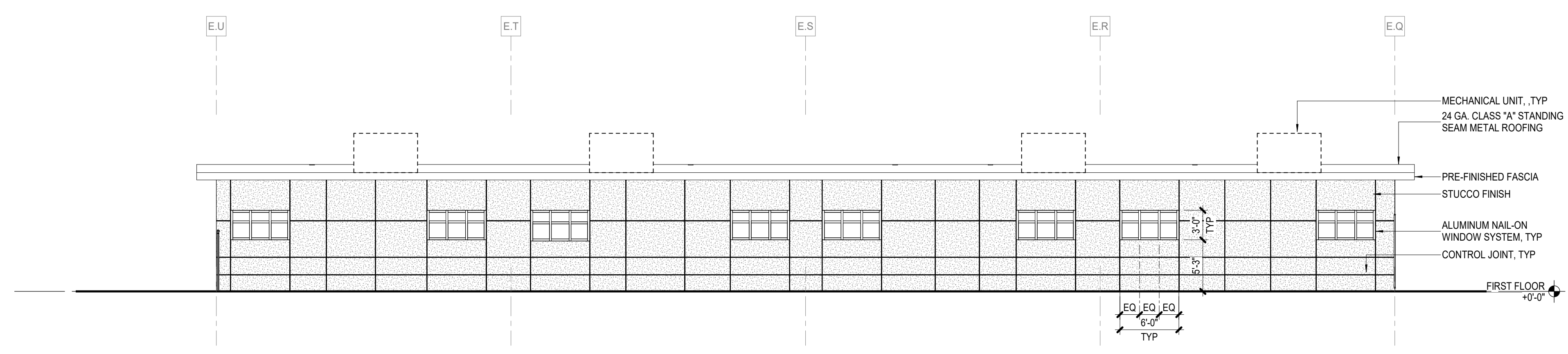
A1.01C

This document is for plan review only

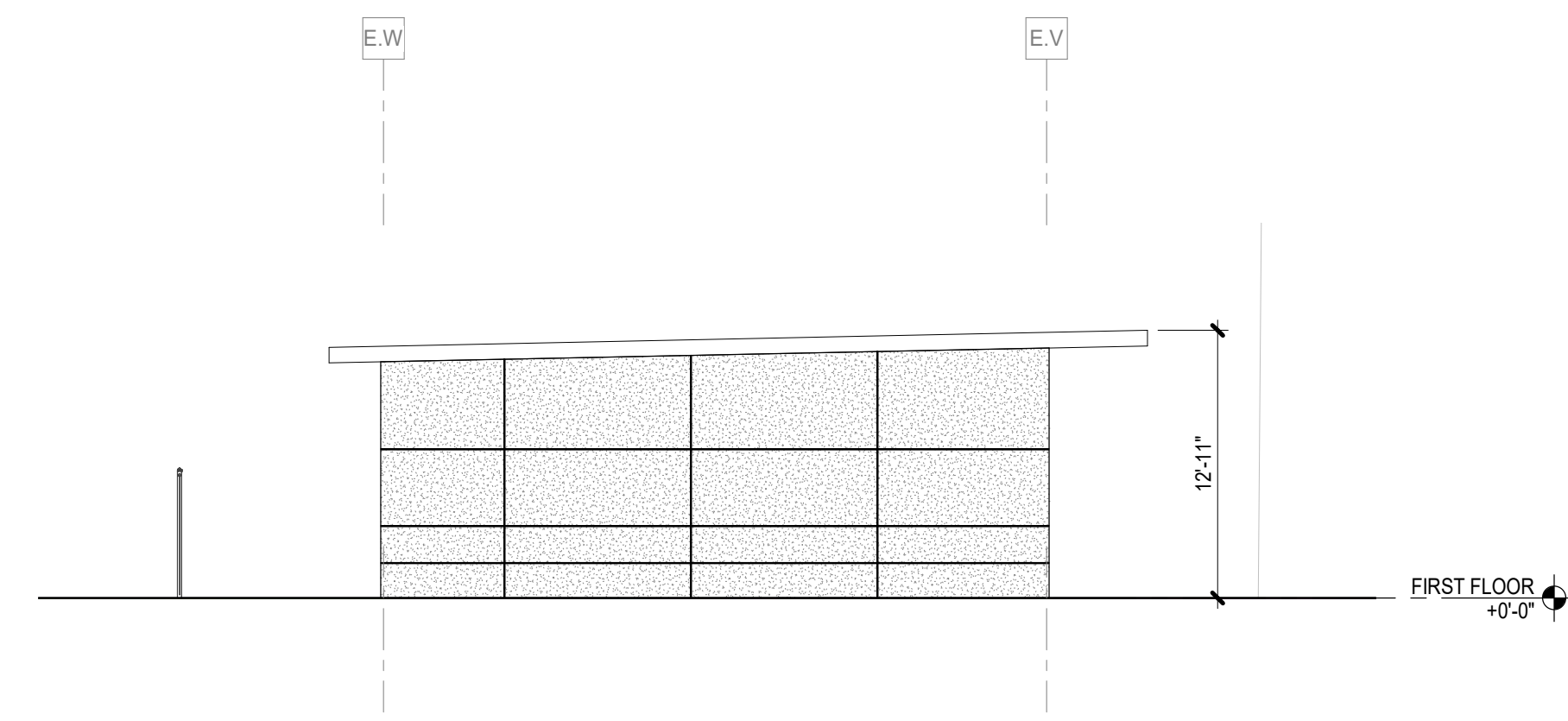
4 EXTERIOR ELEVATION - SOUTH
SCALE: 1/8" = 1'-0"



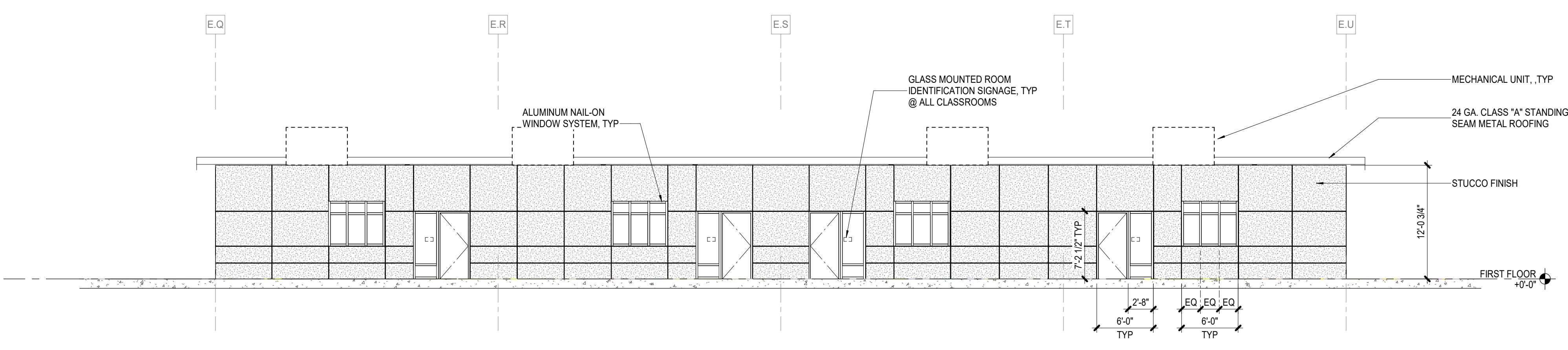
3 EXTERIOR ELEVATION - EAST
SCALE: 1/8" = 1'-0"

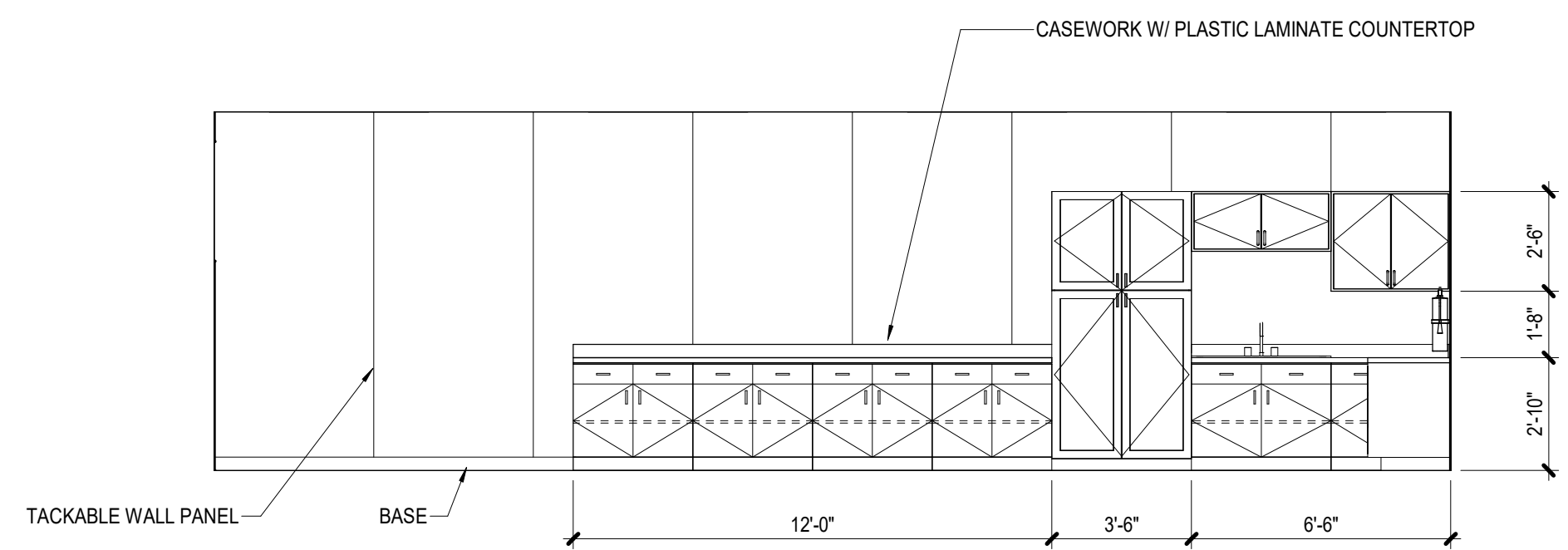
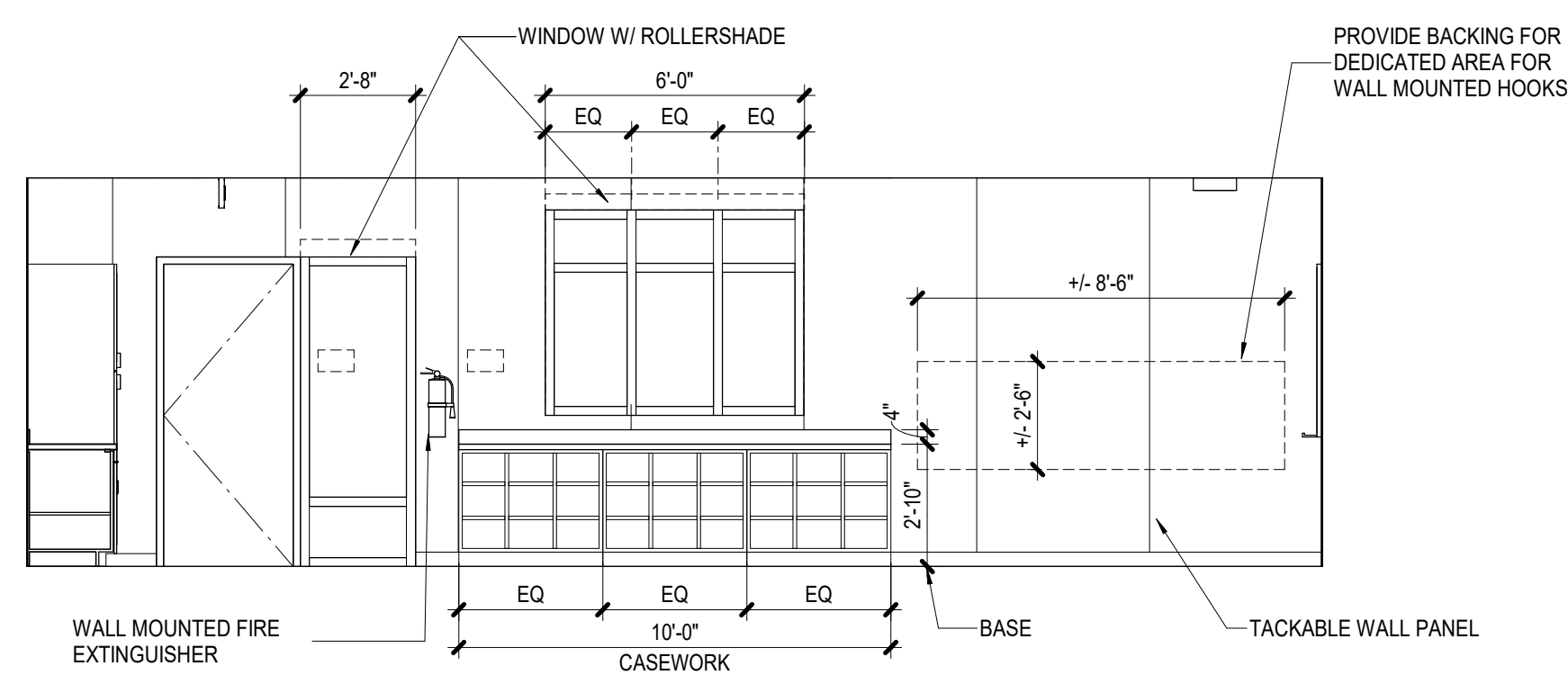
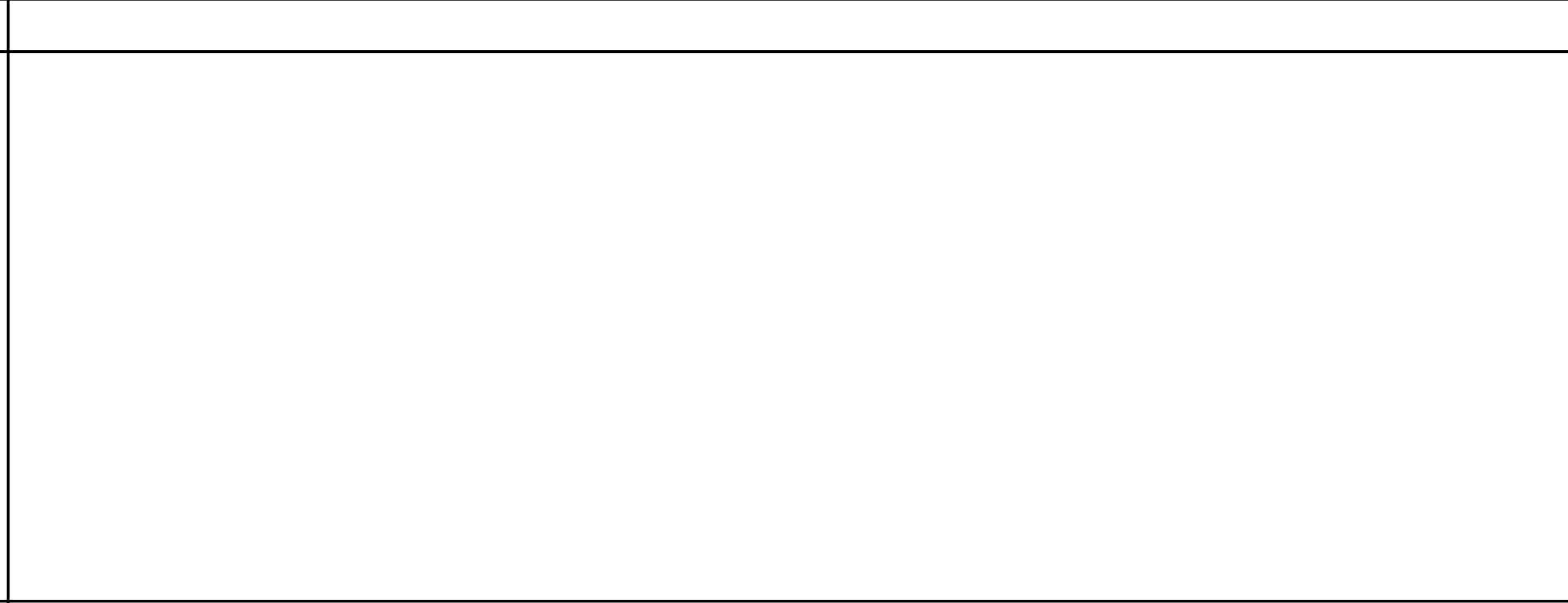
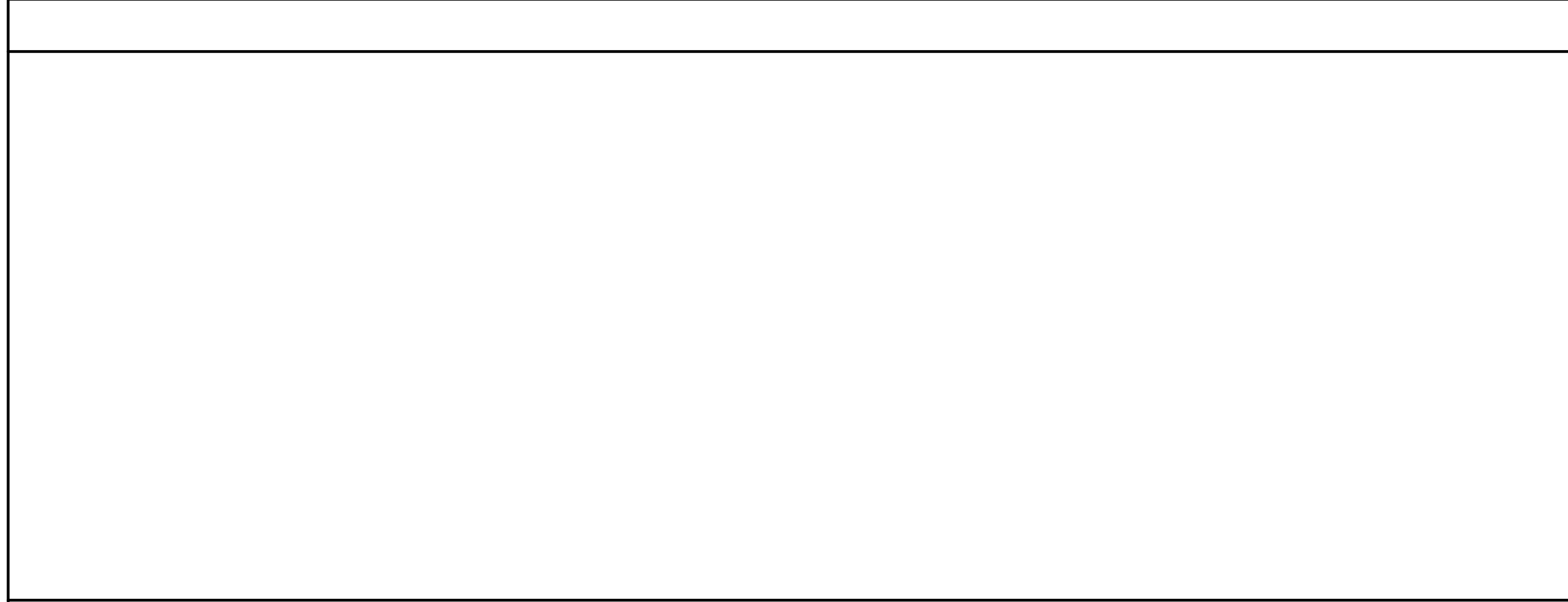
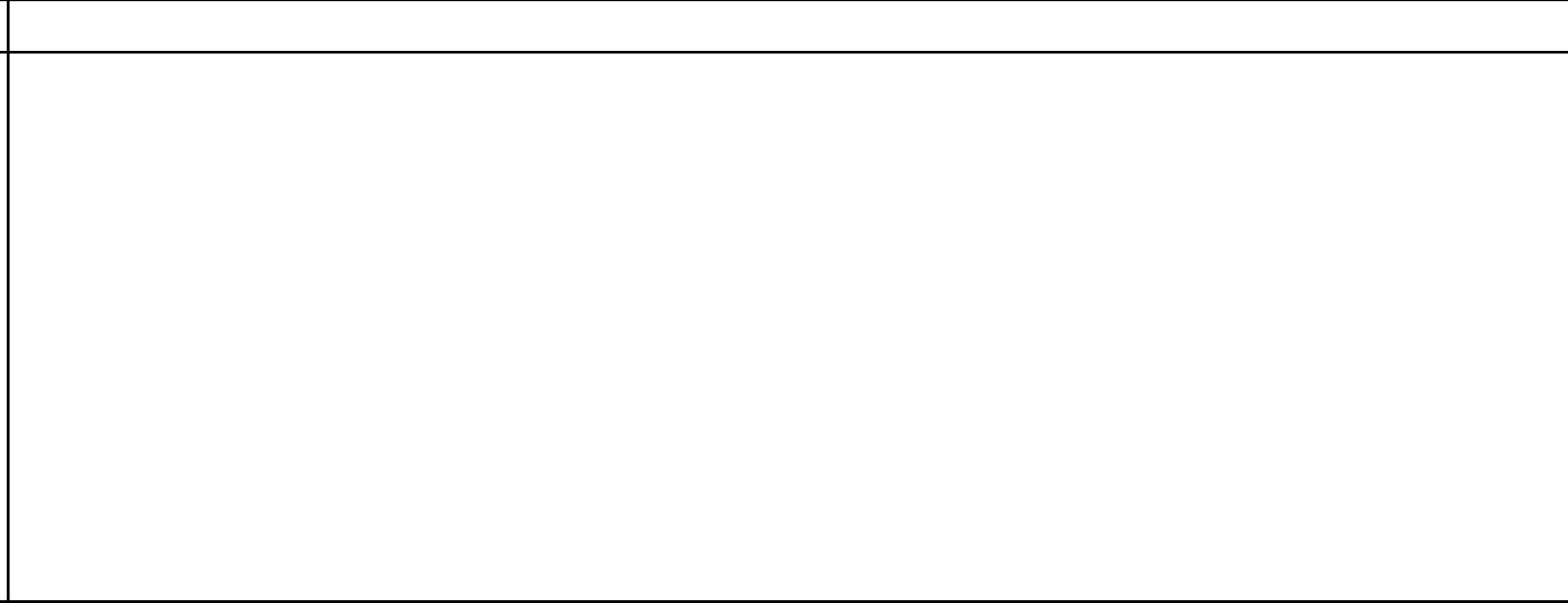
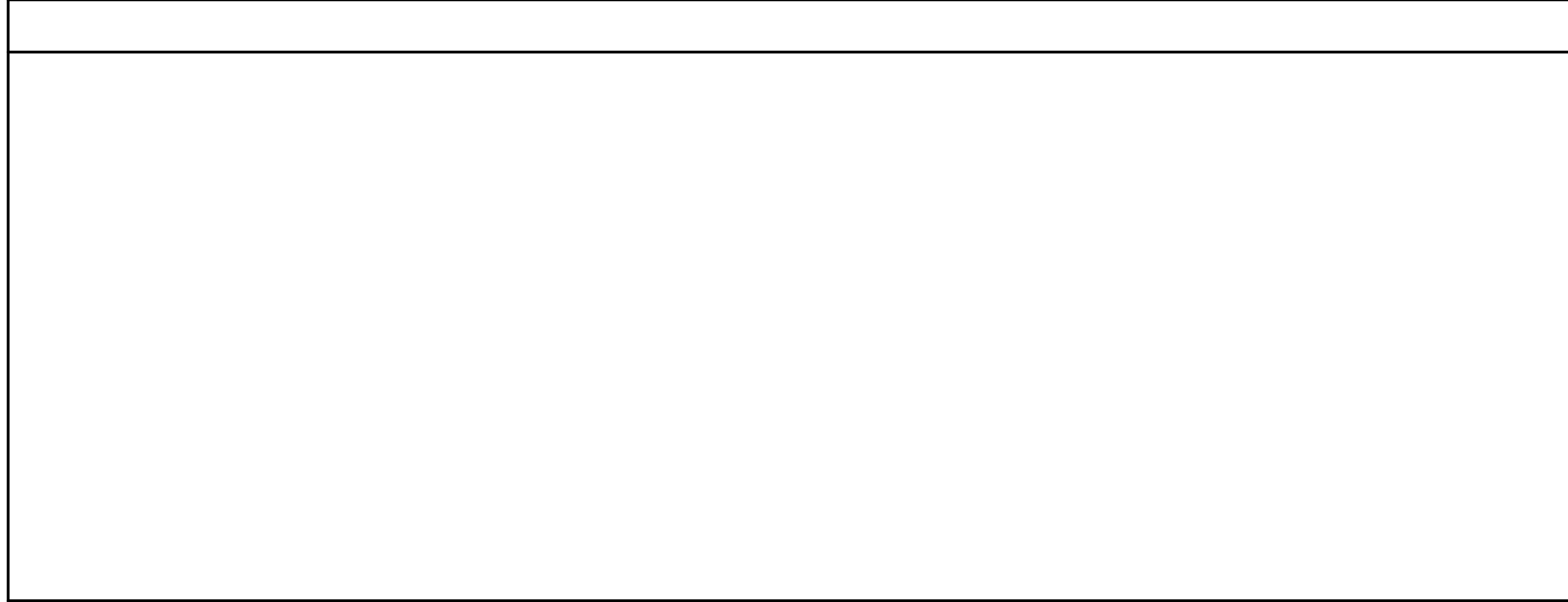
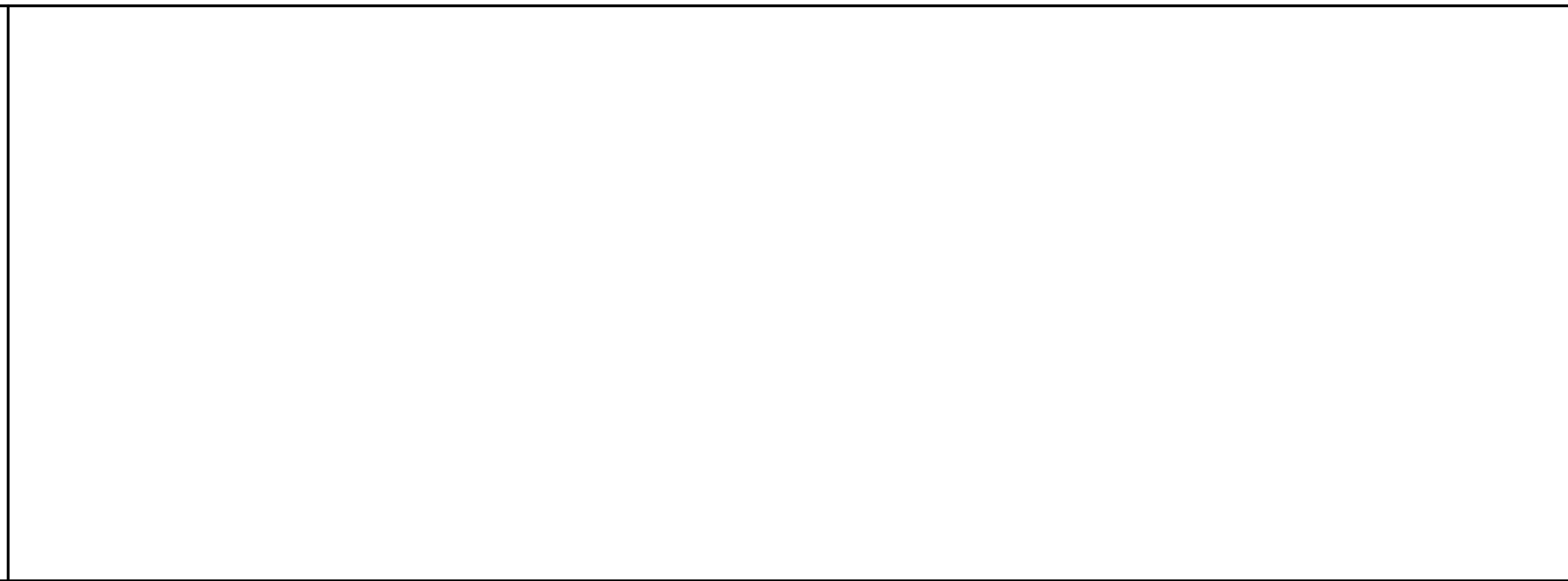
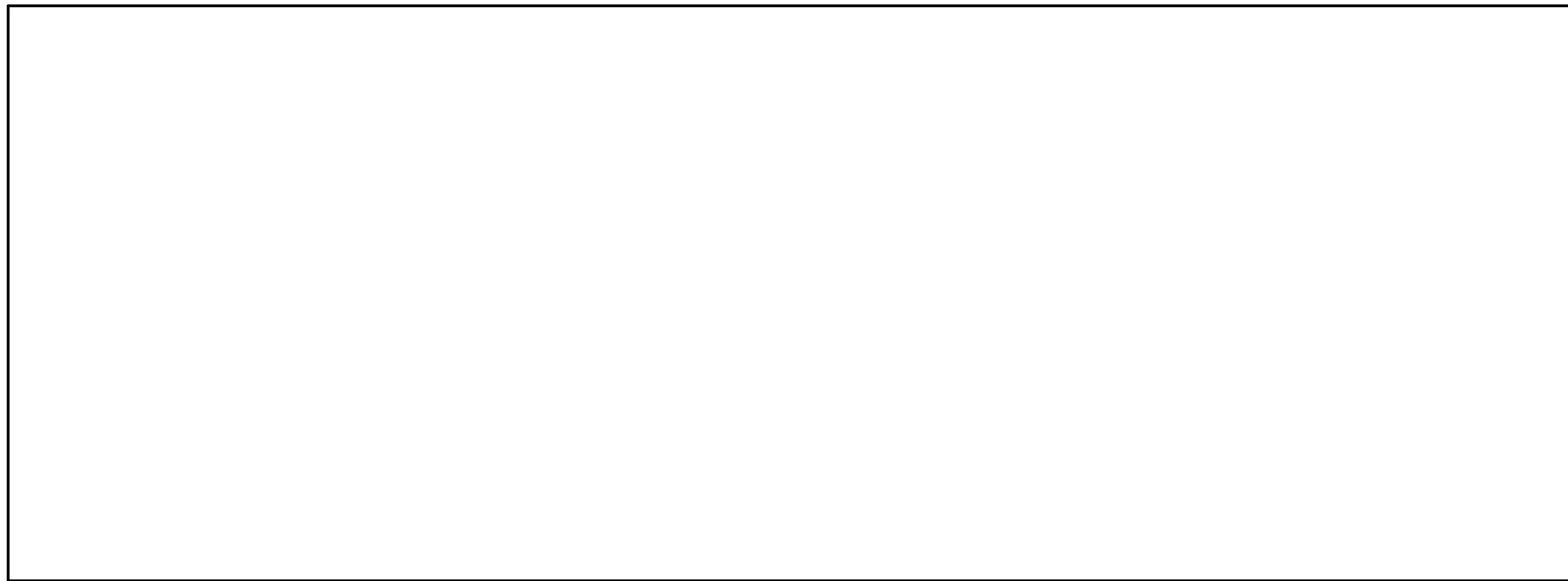


2 EXTERIOR ELEVATION - NORTH
SCALE: 1/8" = 1'-0"



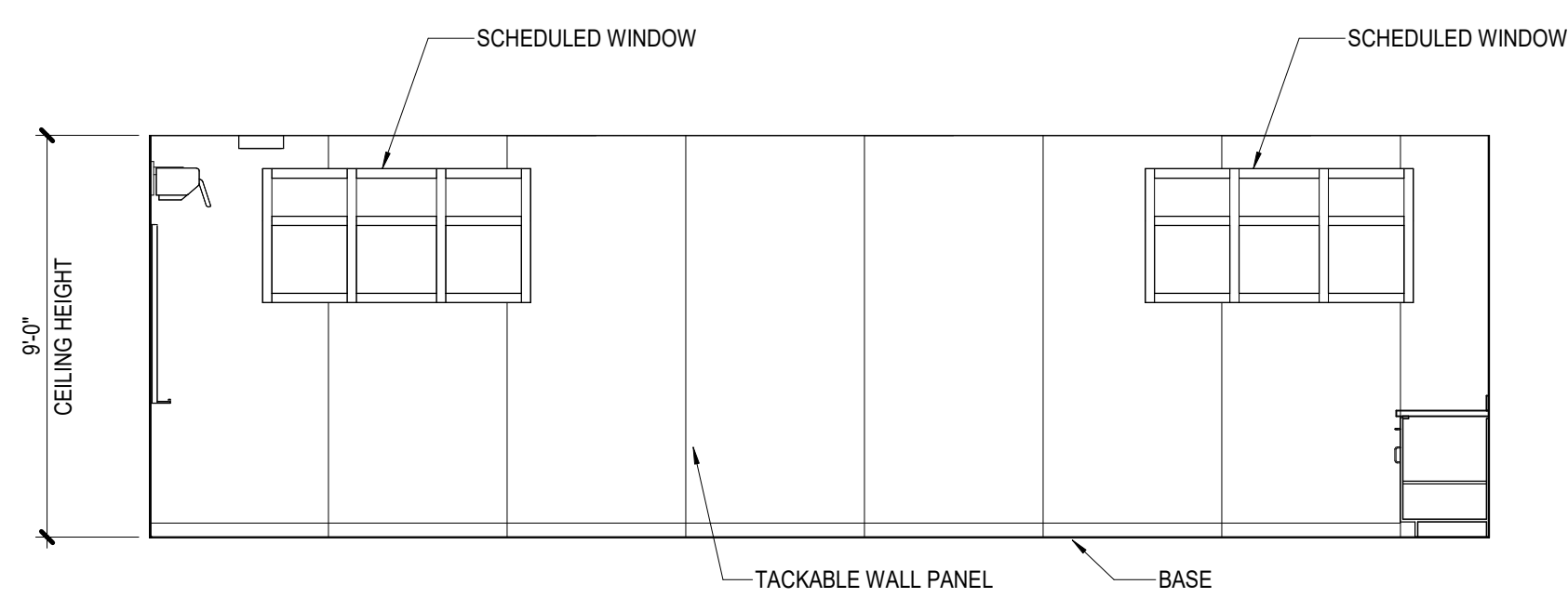
1 EXTERIOR ELEVATION - WEST
SCALE: 1/8" = 1'-0"



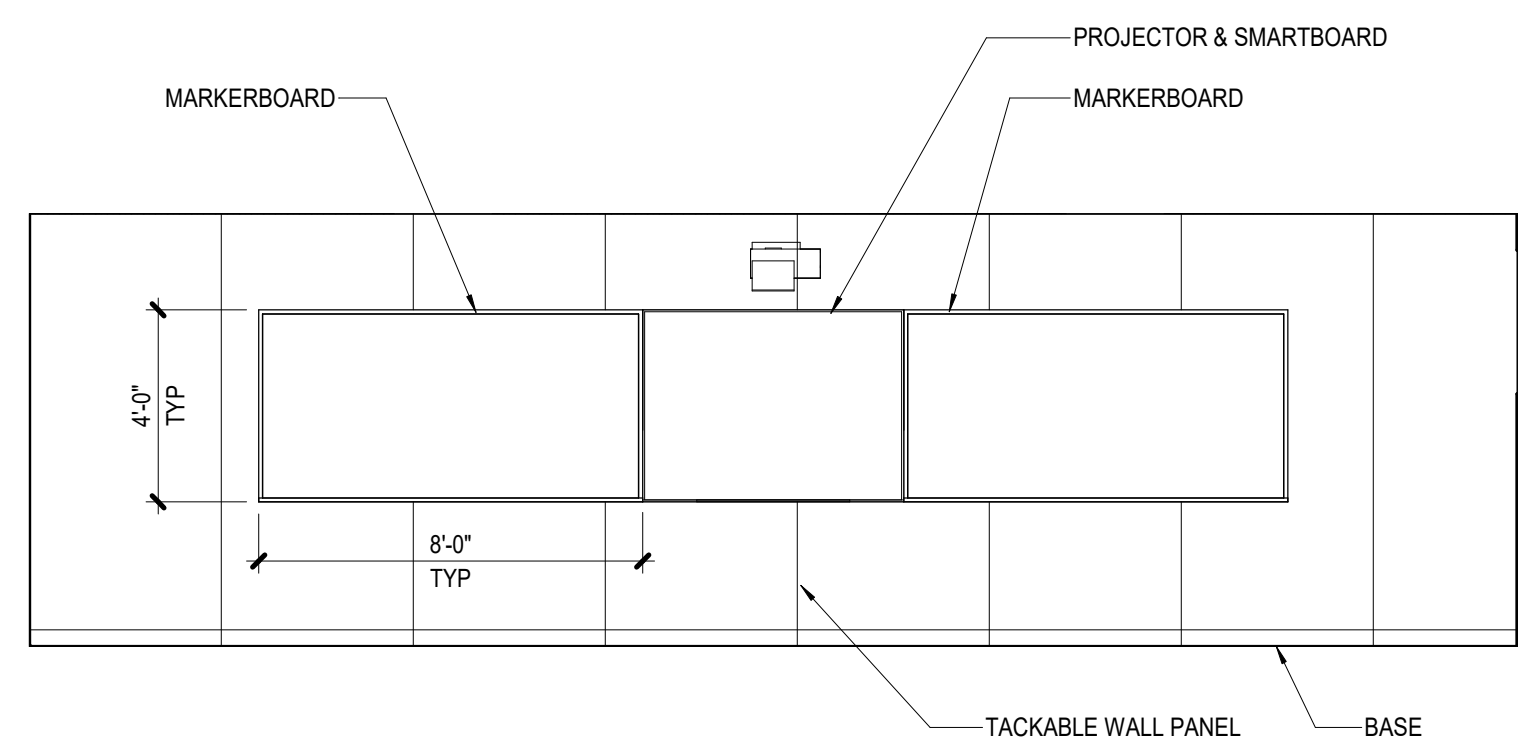


4 INTERIOR ELEVATION - TYP. MODULAR CLASSROOM VIEW D
SCALE: 1/4" = 1'-0"

3 INTERIOR ELEVATION - TYP. MODULAR CLASSROOM VIEW C
SCALE: 1/4" = 1'-0"



2 INTERIOR ELEVATION - TYP. MODULAR CLASSROOM VIEW B
SCALE: 1/4" = 1'-0"



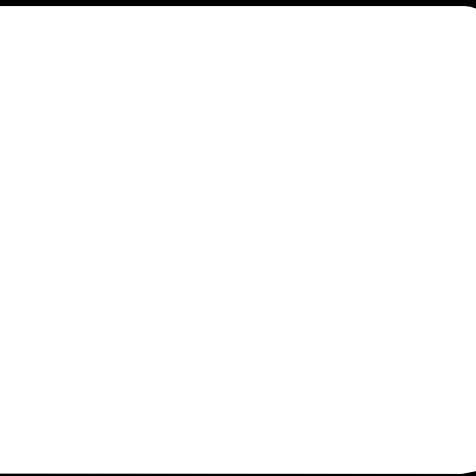
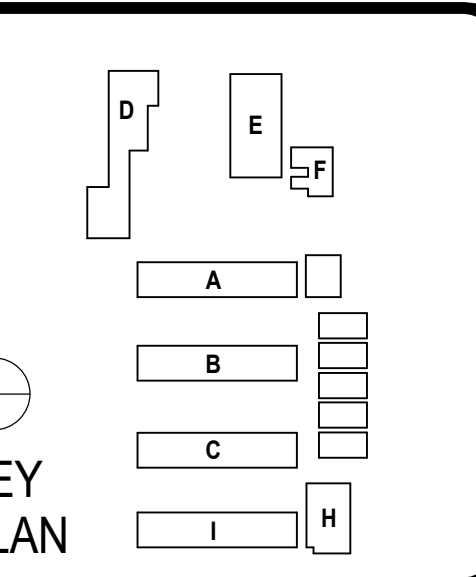
1 INTERIOR ELEVATION - TYP. MODULAR CLASSROOM VIEW A
SCALE: 1/4" = 1'-0"



ARCHITECT PBK Architects, Inc.
FOLSOM
1110 Iron Point Road, Suite 200
Folsom, CA 95630-8315
916-355-6922

DAVIS ELEMENTARY SCHOOL MODERNIZATION

LODI UNIFIED SCHOOL DISTRICT
DAVIS ELEMENTARY SCHOOL
5224 EAST MORADA LANE
STOCKTON, CA 95212



CLIENT		LODI UNIFIED SCHOOL DISTRICT
PROJECT NUMBER		230217
DATE	09/19/2024	
DRAWN BY:	MG	CHECKED BY: KL
REVISIONS		
#	DESCRIPTION	DATE

INTERIOR ELEVATION

A1.01D

Not for permitting or construction

This document is for plan review only